









How to update RaceME products?

Step 1: go to www.raceme.eu and download the latest RaceME USB Uploader setup.

Downloads

file	file size
 RaceME_1.00A_Setup.zip	2.77 MB 
 RM_903B_01B_2007.zip	8.96 MB 
 RaceME Guide.pdf	0.48 MB 

Step 2: unzip the setup file from the downloaded one.

Step 3: launch the setup file to install all necessary files on your PC.

Step 4: download from www.raceme.eu the latest software version for your product (RaceME or RaceME Pro) and for your truck year

Step 5: unzip the update file (extension *.rmu) to a folder of your convenience, for example to your PC desktop

Step 6: connect your product to your PC via an USB cable

Step 7: launch the RaceME USB Uploader program by double clicking the icon on your desktop or by clicking the menu point "Start menu" → "All programs" → "RaceME" → "RaceME"

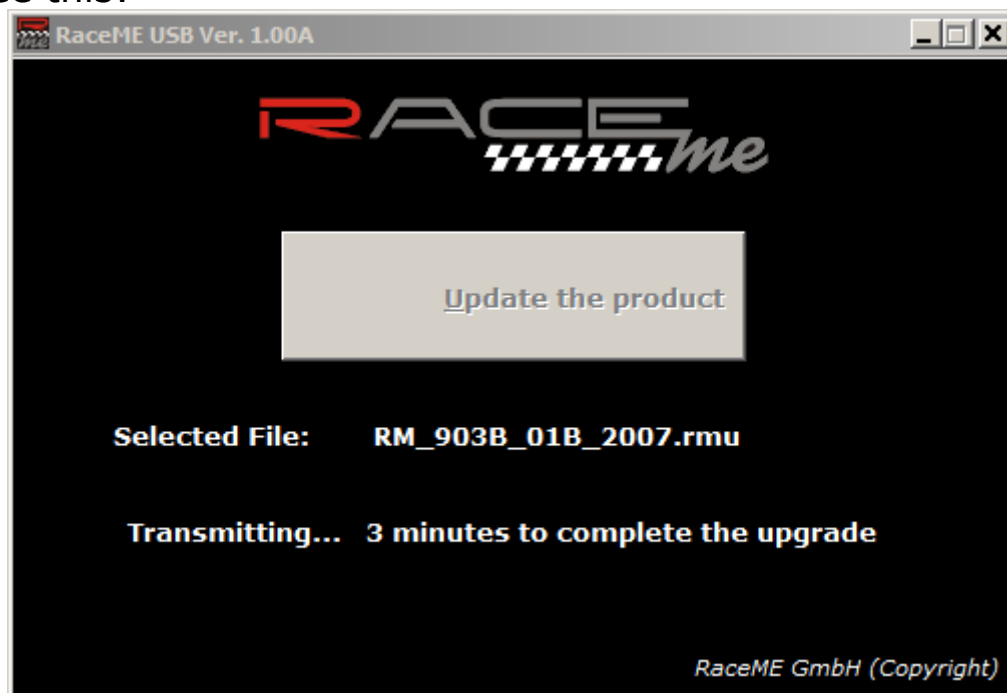


Step 8: click the "Update the product" button on RaceME USB Uploader

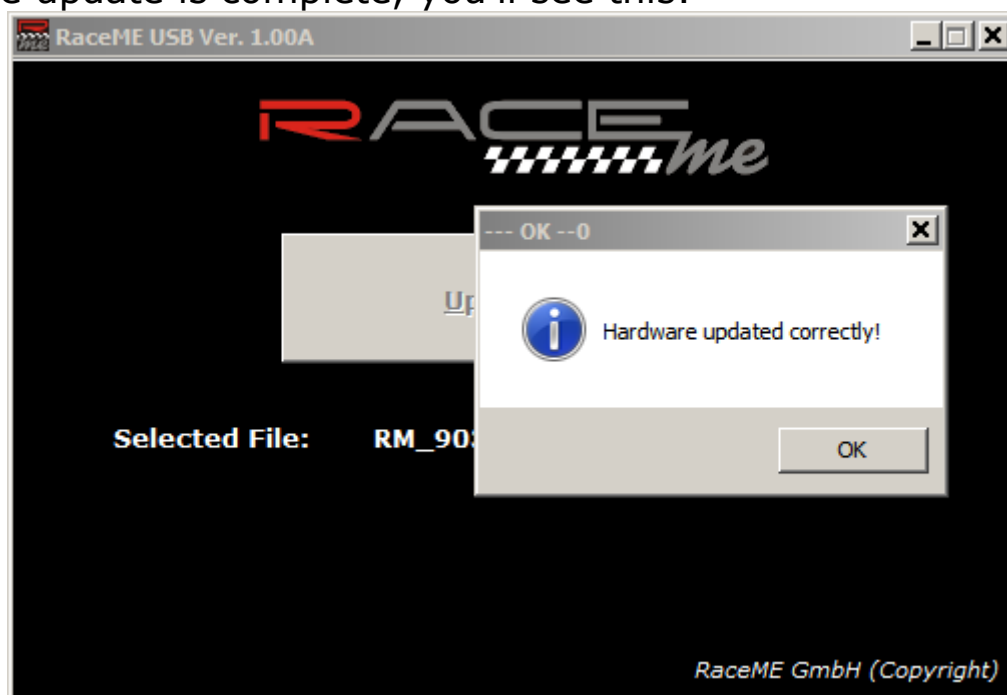
Step 9: a new window opens, select the extracted file at point 5

Step 10: click "Open" button on the file open dialog window

Now the RaceME USB Uploader will start to update your product, you'll see this:



After the update is complete, you'll see this:



Step 11: press any key on your product, now you can remove your product from your PC and tune your truck with the software you downloaded at point 4